



SAANVI
GARDEN HOMES

Love, Laughter & Sunshine

Madhabi

Affordable LIG Residences

Saanvi-Phase 1

Durgapur Expressway, Ghanashyampur

Dankuni - Singur

Mission

Saanvi is presented by Bengal DCL Housing Development Company Limited (Bengal DCL), a well know and respected name in the Indian real estate landscape

Bengal DCL's mission is to offer homes where family comes first. The Company is committed to providing a comfortable, secured, safe and aesthetically pleasing living environment that meets a family's needs and supports its lifestyle, while offering something more, an ambience that helps bring members closer together.

Development Consultants Group & Bengal DCL

Across sectors as diverse as Power, Space, Defence, Metals, Mining, Petroleum, and Real Estate, Development Consultants Group (DC Group) stands as a global name in innovation and excellence and has been delivering holistic solutions that shape industries and transform skylines around the world.

Headquartered in Kolkata, the Group draws strength from a 2,000-strong team of experts spanning engineering, architecture, urban planning, AI, finance, and management.

For over five decades, DC Group has redefined the way cities grow – master planning nearly 30 new townships and designing over 35,000 homes that seamlessly blend sustainability, technology, and human-centric design.

In West Bengal, its signature can be seen across the region's most celebrated landmarks – Science City Kolkata, Howrah Station New Complex, Nicco Park, Ramakrishna Mission Swami Vivekananda's Ancestral House and Cultural Centre, Kolkata and the New Town Kolkata (Revision and Preparation of Master Plan, Detailed Sector Plan and CBD Master Plan)

Founded by the visionary engineer and entrepreneur Dr. Sadhan C. Dutt, and today led by Ms. Shanta Ghosh, DC Group continues to inspire confidence across industries. Its vision for transformative living finds expression in Bengal DCL – a joint venture between the West Bengal Housing Board and DC Properties Pvt. Ltd., embodying the Group's commitment to creating sustainable, intelligent, and inspiring communities for generations to come.

A Portfolio Built On **Trust**

Bengal DCL's Completed Projects



Shree New Town, Kolkata



Sampoorna New Town, Kolkata



Uttara New Town, Kolkata



Malancha New Town, Kolkata



Kheya Santiniketan



Rabi Rashmi New Town, Kolkata

SAANVI Garden Homes



Welcome to the enchanting world of Saanvi – Garden Homes, a thoughtfully conceived premium residential enclave for those who seek the soothing embrace of nature without giving up the comforts of contemporary urban life.

Located just beyond the city limits, near the gateway to Kolkata along the dynamic Durgapur Expressway Growth Corridor, Saanvi is a world of its own where mornings begin with birdsong and evenings melt into golden quiet. It is a Garden Home Community where nature, family, and modern living come together in perfect harmony.

SAANVI Garden Homes

Saanvi features two distinct and separate residential clusters:



Mahua & Madhabi
for MIG & LIG affordable residences



Mallika
for HIG luxury homes



Saanvi's
Unmatched Location

Saanvi's **Unmatched** Location

Positioned at the city's gateway, Saanvi offers unmatched connectivity

Located along the prestigious Durgapur Expressway, *Saanvi* enjoys a connectivity advantage that few neighborhoods can match. It sits just a swift 10-15 minute green corridor drive from the Dakshineswar Metro, your seamless gateway to the heart of Greater Kolkata. With the upcoming Kona Expressway elevated corridor on the horizon, the city will draw even closer—bringing destinations like Esplanade and Park Street, within a comfortable 45-50 minutes reach.

Beyond Kolkata, the wider region also unfolds effortlessly. Bardhaman is just an hour's drive away, making weekend visits, business commutes, or family trips from there, refreshingly simple. The Bardhaman Chord Line and Tarakeswar-Eastern Suburban Rail Corridor lie within easy access too—just a short E-Richshaw ride from the project—opening up a vast network of suburban connections.

Saanvi Is Set to Benefit from a **₹5,400 Crore Connectivity Transformation**

The region surrounding Saanvi is embracing a transformative leap forward, with nearly ₹5,400 crore being invested to create seamless connectivity along the Durgapur Expressway corridor. These massive infrastructure projects will redefine accessibility, ensuring faster, effortless commutes and lifestyle where Saanvi stands at the crossroads of opportunity

Amenities & Facilities around Saanvi

Health Care Facilities, Kindergarten, Senior School and Convenient Stores & Market within 1 to 45 minutes driving distance from *Saanvi*

Polyclinic & Diagnostics

Suraksha Diagonistics, Dankuni
City Polyclinic, Dankuni
Apollo Clinic, Uttarpara
Seven Ranger's Hospital, Dankuni

Convenient Stores & Markets

M-Bazaar, Singur
RK Enterprise, Singur
One, Dankuni
Nasibpur Bazar
Singur Bazar

Super Specialty Health Care Facilities

Narayana Hospital, Howrah
Shree Jain Hospital & Research Center, Howrah
Disha Eye Hospital, Sheoraphuli

Restaurant & Fine Dining

Your Choice Dine Express, Singur
Hotel Labanya, Singur
Dawat, Dankuni

Emergency Health Care Facilities

Trauma Care Facility, Singur
Singur Rural Hospital, Singur
Himadri Super Specialty Hospital Singur

Senior Schools

Swami Vivekananda Vidya Mandir, Singur (CBSE)
St. Johns's School, Dankuni (CBSE)
Uttarpara Government High School, Uttarpara (WBCHS)
GD Goenka Public School, Dakshineshwar (CBSE)
Methodist School, Dankuni (CISCE)

“Saanvi – Phase 1” is a phase of the larger Saanvi-Garden Homes project which has been envisioned by Bengal DCL Housing Development Company Limited. This Vision Plan shown here represents that overall vision of Bengal DCL. However, the Project that is coming up and has been approved by relevant statutory authorities and is being offered to the public for sale is “Saanvi – Phase 1”.

“Saanvi – Phase 1” is registered with the West Bengal Real Estate Regulatory Authority (WBREERA) under Registration No. WBREERA/P/HOO/2025/003679. “Saanvi – Phase 1” comprises of three Mallika (HIG) Blocks in the Mallika Cluster and one Madhabi Block in the the Mahua-Madhabi (MIG-LIG) Cluster.






Phases beyond Phase 1 are not registered with RERA and are subject to future approvals. All representations, illustrations, and depictions of future phases, whether visual, graphical, or otherwise—are indicative and subject to change. Kindly refer to the WBREERA website for the details.

Location:

On Durgapur Expressway
Ghanashyampur
Block: Singur, Hooghly



Vision Plan

-  Mallika (HIG) Homes
-  Saanvi-Phase 1: Mallika
-  Mahua-Madhabi Blocks
-  Saanvi-Phase 1: Madhabi
-  Common Buildings



Madhabi under
Saanvi-Phase 1

Architect's Impression

“Saanvi – Phase 1” is the first phase of the Saanvi project and is registered with the West Bengal Real Estate Regulatory Authority (WBREERA) under Registration No. **WBREERA/P/HOO/2025/003679**

Phase 1 comprises a Mallika (HIG) cluster and the Mahua–Madhabi (MIG–LIG) cluster with only one Madhabi Block.

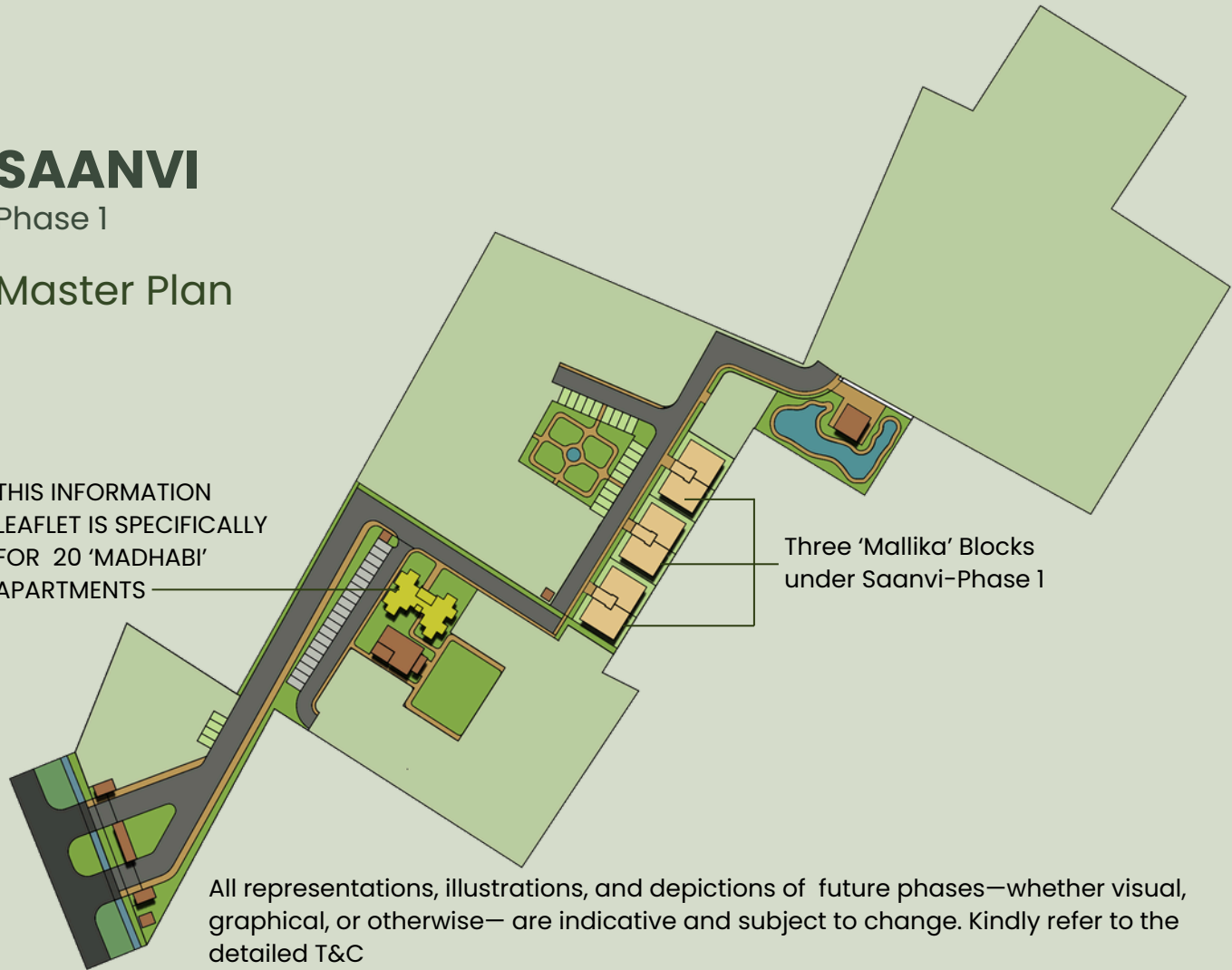
SAANVI

Phase 1

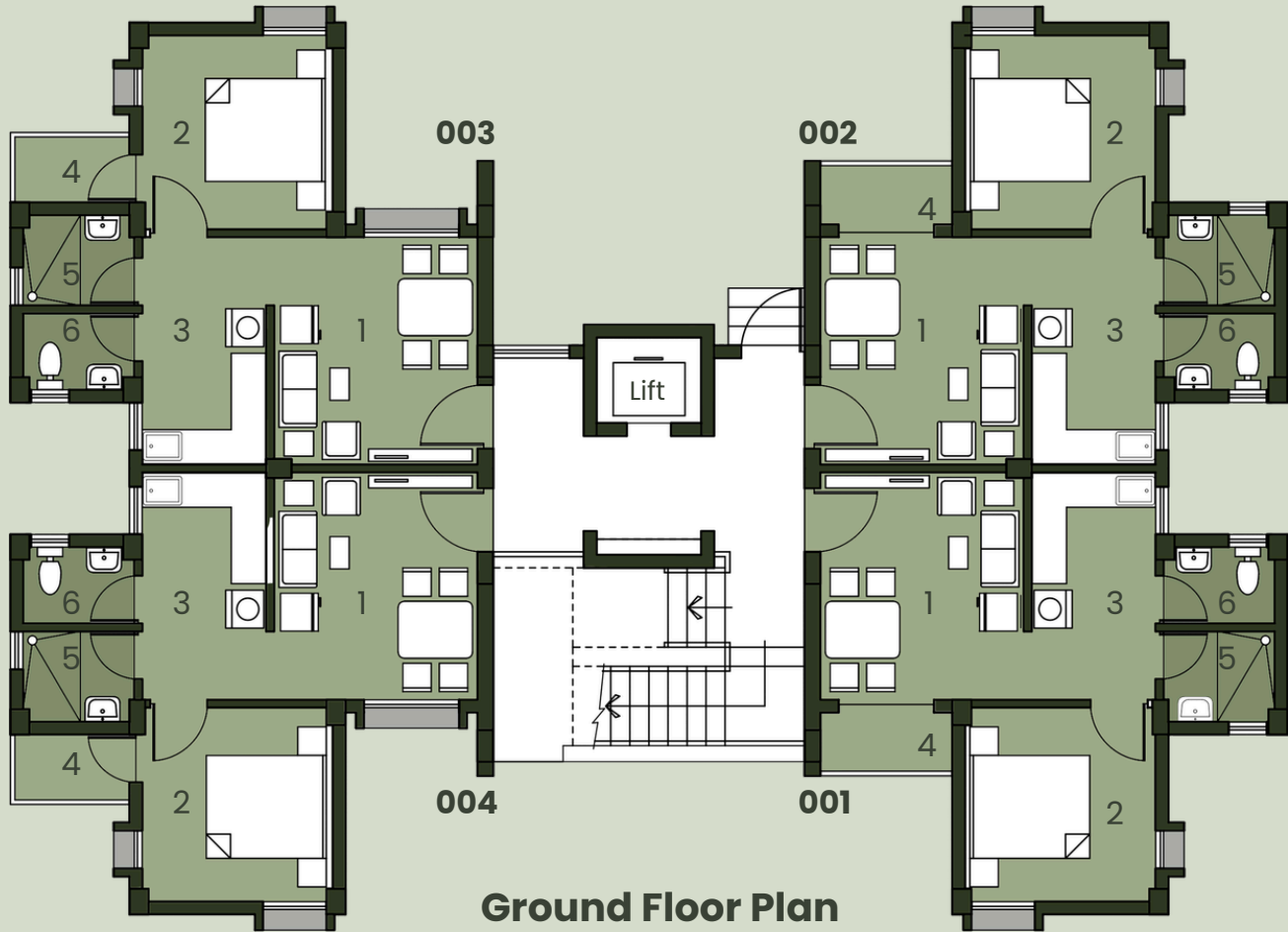
Master Plan

THIS INFORMATION
LEAFLET IS SPECIFICALLY
FOR 20 'MADHABI'
APARTMENTS

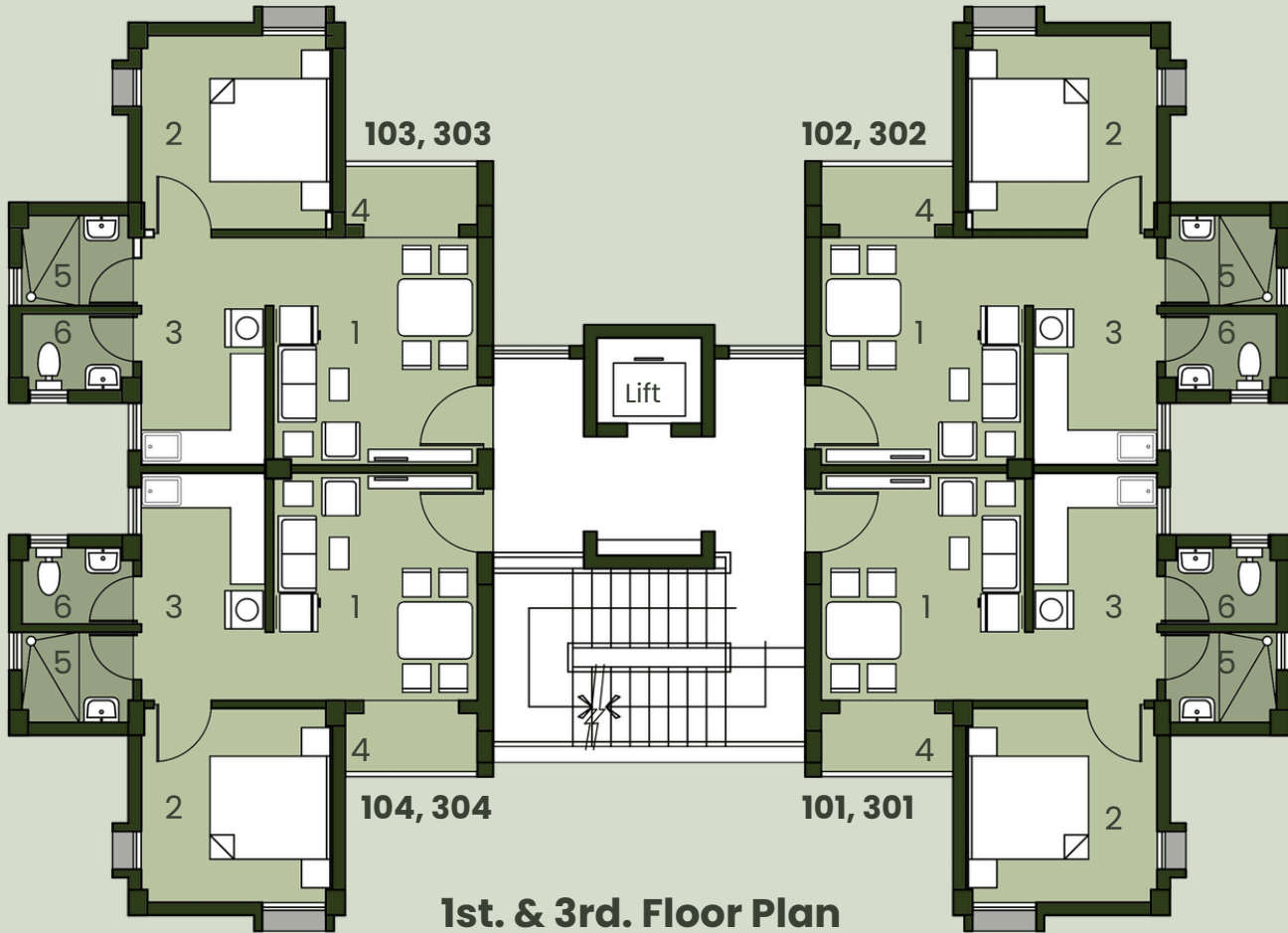
Three 'Mallika' Blocks
under Saanvi-Phase 1



All representations, illustrations, and depictions of future phases—whether visual, graphical, or otherwise— are indicative and subject to change. Kindly refer to the detailed T&C



Uses	Apt # 001 & 002	Apt # 003 & 004
1. Multipurpose Room	3.20 m x 3.58 m	3.20 m x 3.58 m
2. Bed Room	3.00 m x 3.05 m	3.00 m x 3.05 m
3. Kitchenette	1.95 m x 1.75 m	1.95 m x 1.75 m
4. Balcony	2.08 m x 1.00 m	1.88 m x 1.10 m
5. Bathroom	1.68 m x 1.43 m	1.68 m x 1.43 m
6. Toilet (WC)	1.68 m x 1.20 m	1.68 m x 1.20 m

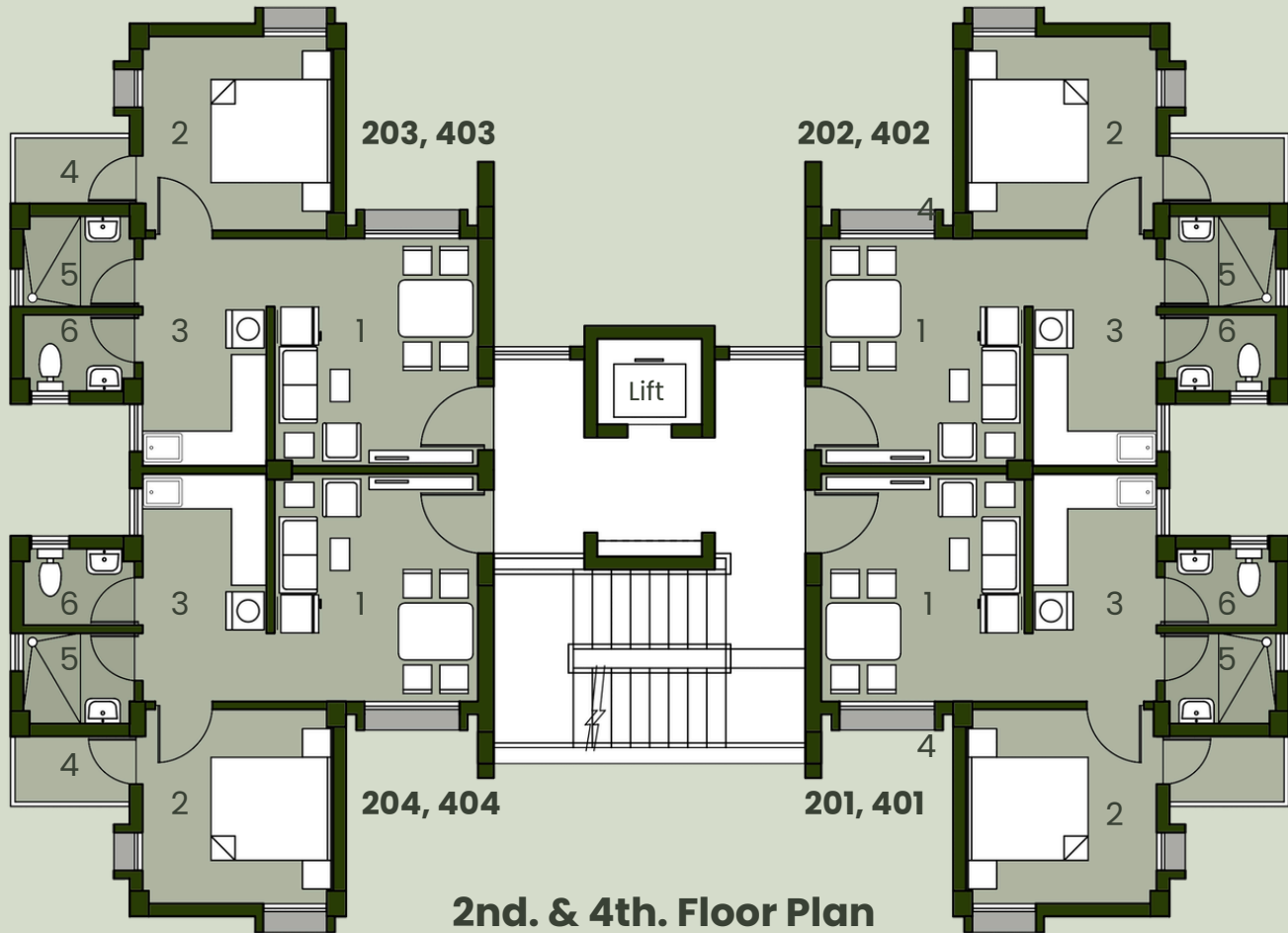


1st. & 3rd. Floor Plan

Uses

Apt # 101, 102, 103, 104, 301, 302, 303 & 304

1. Multipurpose Room	3.20 m x 3.58 m
2. Bed Room	3.00 m x 3.05 m
3. Kitchenette	1.95 m x 1.75 m
4. Balcony	1.88 m x 1.10 m
5. Bathroom	1.68 m x 1.43 m
6. Toilet (WC)	1.68 m x 1.20 m



Uses	Apt # 201, 202, 401 & 402	# 203, 204, 403 & 404
1. Multipurpose Room	3.20 m x 3.58 m	3.20 m x 3.58 m
2. Bed Room	3.00 m x 3.05 m	3.00 m x 3.05 m
3. Kitchenette	1.95 m x 1.75 m	1.95 m x 1.75 m
4. Balcony	2.08 m x 1.00 m	1.88 m x 1.10 m
5. Bathroom	1.68 m x 1.43 m	1.68 m x 1.43 m
6. Toilet (WC)	1.68 m x 1.20 m	1.68 m x 1.20 m



Amenities

Air Conditioned Community Hall

24 x 7 CCTV Surveillance System

24 x 7 Security Service

Lawn / Children's Play Area

Generator Back-up for Common Area

Lift





Specification

Foundation Superstructure

RCC Pile
Earthquake Resistant
RCC Frame Structure

Floor Finish

Inside Flat
Lift Lobby

Ceramic Vitrified Tiles
Ceramic Vitrified Tiles

Window Door

Walls Kitchen Counter

Aluminium
Flush Door
POP
Granite

How To Apply

Step 1:

Please fill in the Application Form and submit it in accordance with the instructions provided in the Information Booklet, available in this kit. You may also apply online by logging onto www.bengaldcl.com

Step 2:

Please submit the duly filled-in Application Form along with the necessary enclosures at any one of the three 'Submission Points' mentioned in the Application Form. Alternatively, you may send the same to Bengal DCL by registered post or courier. The postal address to which the Application Form is to be sent is also mentioned in the Application Form.

WBRERA/P/HOO/2025/003679 | www.rera.wb.gov.in

This brochure is purely conceptual and not a legal offering. All images, layouts, plans, designs, dimensions, and details related to future phases are artistic impressions and indicative in nature, subject to change as may be deemed fit by the Company.

The information contained herein does not constitute part of any contract, agreement, or legal document. Purchasers are advised to verify all project details, specifications, amenities, areas, and statutory approvals independently before making any purchase decisions. The Project is registered under the Real Estate (Regulation and Development) Act, 2016 (RERA) and the applicable rules thereunder. For complete and updated information, please refer to the RERA website using the project's registration number. The Company shall not be responsible or liable for any claims, losses, or consequences arising from reliance on the contents of this brochure.



033-65211811



9836004411



www.bengaldcl.com



Bengal DCL Housing Development Company Limited

Development Consultants House

DG 04 Salt Lake City
Kolkata 700 091

T: 033-65211811 | M: +91 9836004411 | E: bdcl@in.dclgroup.com

www.bengaldcl.com